

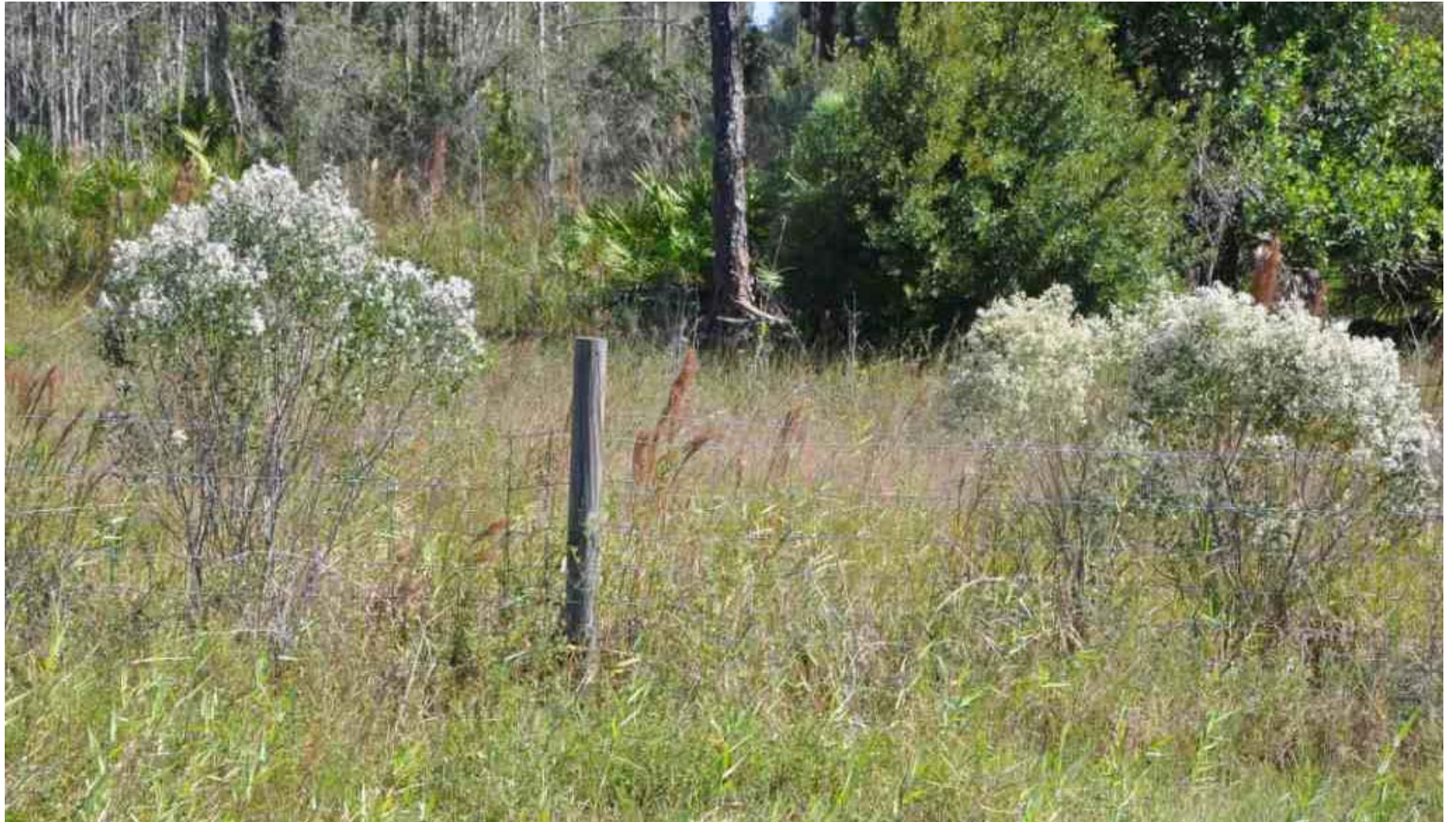
What's Blooming?

Early November, 2010

Saltbush

Baccharis halimifolia

Stephen H. Brown
Lee County Extension
Southwest Florida



Plants in Lee County along I-75



UF Campus, Gainesville



North Collier County



Stem with axillary shoots



Numerous stems and the impending flight of pappi

The saltbush is native from Florida, north to Massachusetts, along the U.S. Gulf Coast and into Northern Mexico

It tolerates temperatures as low as - 30°F.

Phenology:

- Blooms primarily in November with some few in December

- [Lawn and Garden Homepage](#)
- [Library of Native Plants Fact Sheets & Video Clips](#)
- [Saltbush Fact Sheet](#)
- Brownsh@leegov.com