

## Undescribed Whitefly on Cocoplum

An undescribed species (*Aleurotrachelus sp.*) of whitefly was found on cocoplum (*Chrysobalanus icaco*) near Sanibel, southwest Florida, in December of 2010. Damage to the plants were not extensive but whitefly populations on many leaves were high. *Aleurotrachelus sp.* has been found in Broward, Highlands, Indian River, Lee, Miami-Dade, Monroe and Palm Beach Counties. Its host range include *Coccoloba uvifera* (seagrape), *Ardisia*, *Coprosma*, *Eugenia*, *Jasminum*, *Lyonia*, *Malpighia*, and *Randia*. Whiteflies (Aleyrodidae family) are primarily tropical or subtropical insects. Immature stages are scalelike feeding by sucking the sap from plants. Adults are small insects that are typically covered with powdery whitish wax. Whiteflies possess a unique final development stage from which the adults emerge and do not feed.

On this field visit, the following behavior of *Aleurotrachelus sp.* were observed by the agent and customers.

- The whiteflies were concentrated on the under side of the leaves.
- Heavily infected leaves were often adjacent to apparently “clean” leaves.
- Shaking the cocoplum hedge produced noticeable flights of adult whiteflies.



S.H. Brown

The uppersides of the leaves show no signs of whitefly infestation.



S.H. Brown

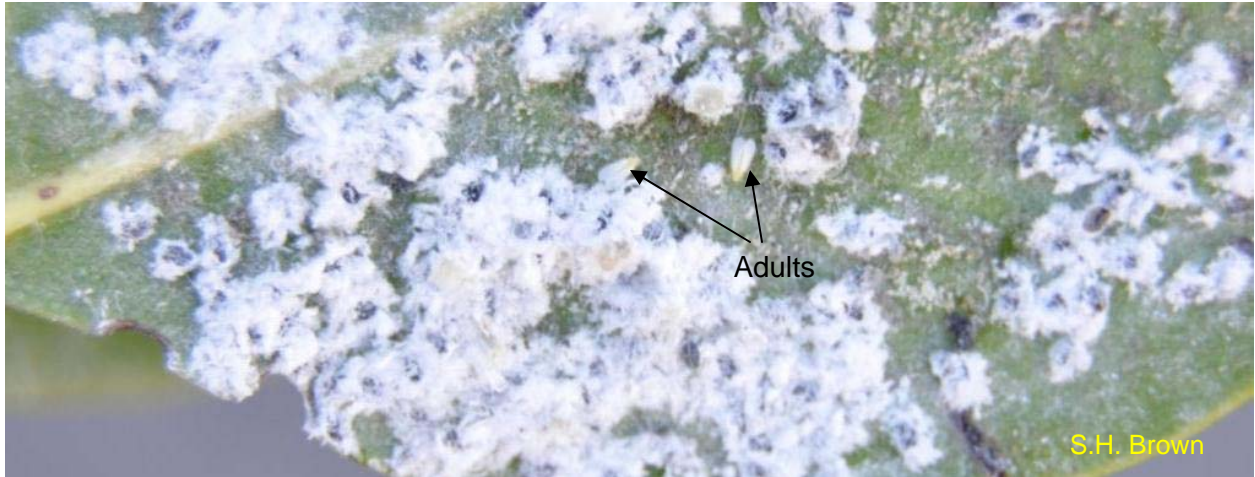
The undersides are populated with high concentrations of *Aleurotrachelus sp.*



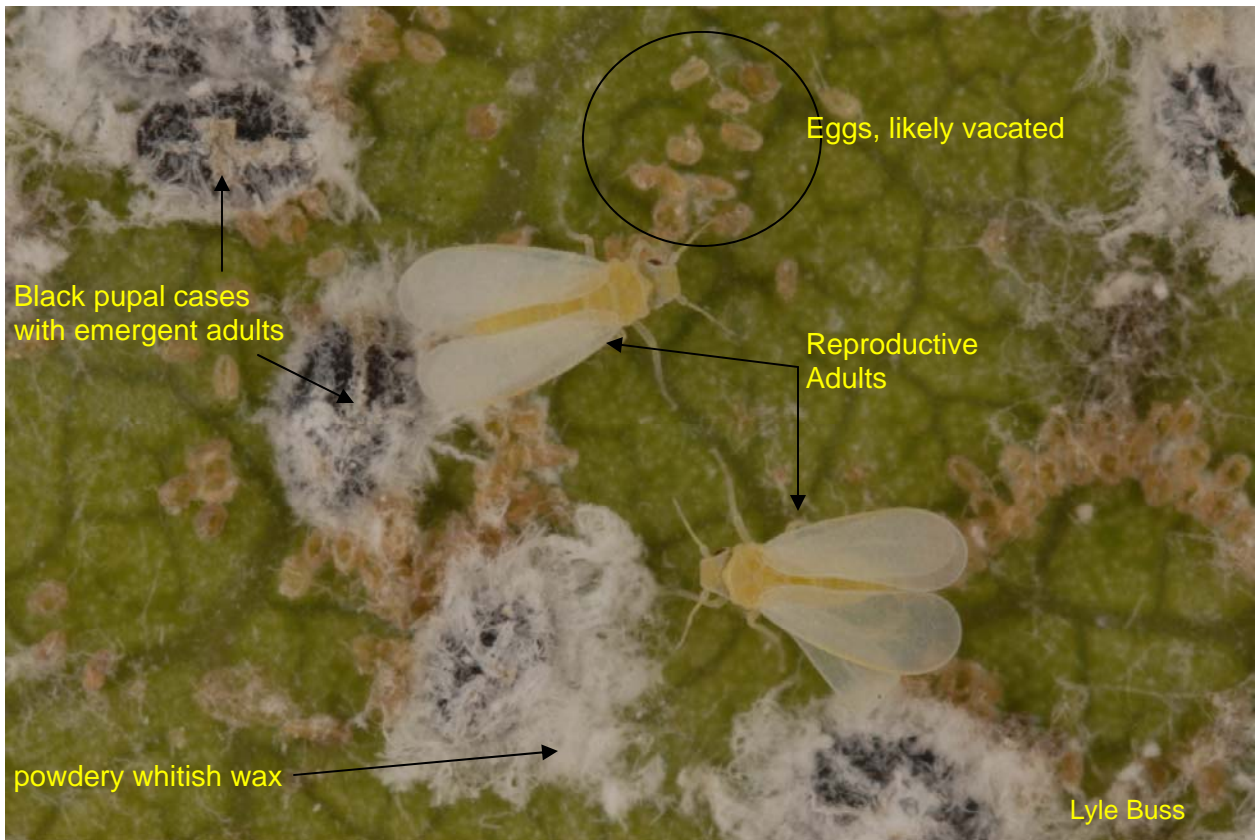
S.H. Brown



Lyle Buss



The size of two adults relative to the size of the leaf.



Make up of the colony.



Metamorphosis sequence of *Aleurotrachelus* sp. and other whiteflies

Egg → Nymph → Pupa → Adult

[Cocoplum fact sheet](#)

[Whiteflies on Landscape Ornamentals fact sheet](#)

[Whiteflies on Red Powderpuff YouTube](#)

This fact sheet was reviewed by Peggy Cruz, Lee County Extension; John Rae, Lee County Master Gardener; Steve Morton, Shell Point Landscape Management Team and Ian Stocks, FDACS.

The Institute of Food and Agricultural Sciences (IFAS) is an Equal Opportunity Institution authorized to provide research, educational information and other services only to individuals and institutions that function with non-discrimination with respect to race, religion, age, disability, sex, sexual orientation, marital status, national origin, political opinions or affiliations. U.S. Department of Agriculture, Cooperative Extension Service, University of Florida, IFAS, Florida A. & M. 1/2011.