

RAISING HEALTHY GOATS AND LAMBS



Understanding the fundamentals

Introduction

- Humans domesticated goats as early as 10,000 years ago
- From this primitive type, our modern, high-producing breeds were developed
- Today's Angora produces 10 kg of mohair each year
- The Boer (South African meat-goat) grows quickly to 220 pounds
- Modern dairy goat breeds produce over 1000 kg of milk in 10 months

Social disposition



- ◆ Goats are inquisitive
- ◆ Goats are highly social
- ◆ Goats accept the need to live together
- ◆ Goats will accept people as part of the herd
- ◆ Goats are willing to follow their human 'head goat'

About meat goats



- ◆ In January 2005 there were 1.9 million heads of meat goats in the U.S.
- ◆ The demand for goat-meat is increasing
- ◆ Meat from goat is called chevon
- ◆ Chevon is low in fat and cholesterol

About dairy goats

- ◆ In January 2005, dairy goats totaled 283,500 heads in the U.S.
- ◆ Goat's milk forms a curd that people find easier to digest
- ◆ People allergic to cow's milk can digest goat's milk without a problem



About sheep

- ◆ People in West Asia hunted wild sheep from the beginning of the stone age
- ◆ About 10,000 BC, some people in West Asia began to keep tame, domesticated sheep for themselves.



About sheep

- ◆ Once people saw how useful sheep were in West Asia, they brought sheep to other parts of Europe, Asia, and Africa as well
- ◆ Early sheep only had hair, like goats. As people began to breed sheep to make them more useful, they began to breed them with longer hair, and gradually sheep got woolier
- ◆ By around 3000 BC, it was possible to spin sheep's wool and weave it into cloth

Compare & contrast

	Sheep	Goat
Species:	Ovis aries (ovine)	Capra hircus (caprine)
Hair:	Wool	Mohair/Cashmere
Meat:	Lamb/Mutton	Cabrito/Chevon
Gestation period:	145 days	149 days
# at birth:	1- 4	1-3



Lee County Extension Service

**Agriculture &
Natural Resources**

Housing



- ◆ The building must be dry inside
- ◆ Adequately ventilated
 - A very snug, airtight building will allow moisture build up and condensation inside, causing respiratory problems in goats

Housing



- ◆ Build wooden sleeping platforms
- ◆ Deep bedding pack
 - These prevent animals from sleeping on the floor and helps to keep them warm and dry
- ◆ Small exercise yard
- ◆ Place gate latches out of reach

Housing



- ◆ Separate older breeding bucks/rams to their individual space
- ◆ More than one young buck/ram can be kept together

Feeding and watering

◆ Provide hay feeder

- Place them where you can fill them without having to get into the pen with the animals

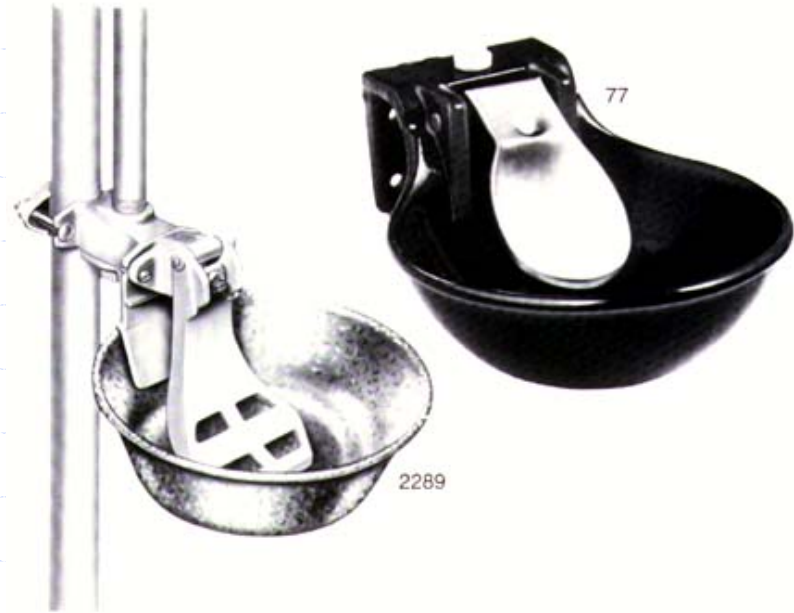


◆ Provide a box for salt mineral mix



Feeding and watering

- ◆ Provide access to clean fresh water
 - Automatic waterers are wonderful as they cut down on spillage



Nutrition – *Pasture grazing*

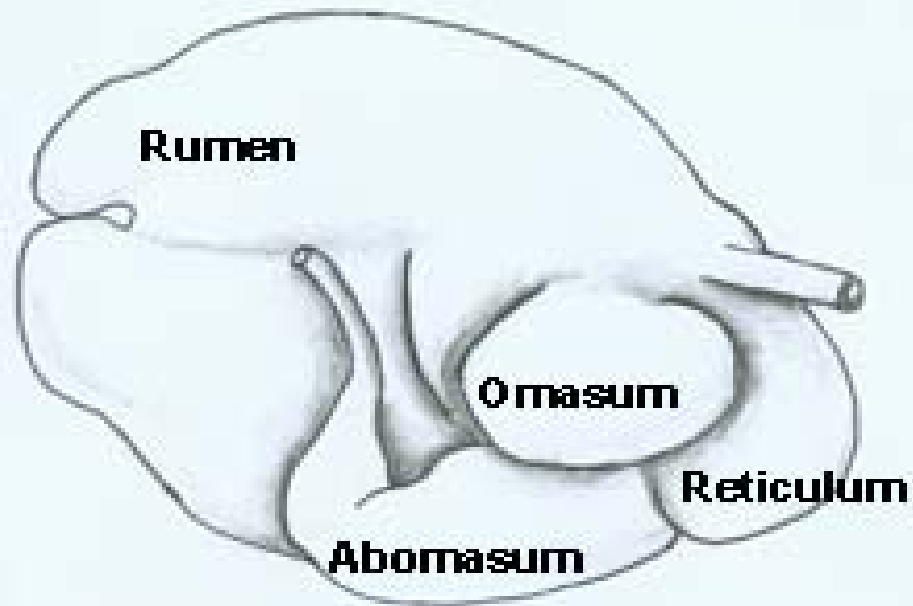
- The most efficient system is ‘controlled grazing’.
- Pastures are divided into smaller units (paddocks)
- Forage is grazed to a predetermined height
- Sheep/goats prefer to eat forage no taller than 6 inches.
- Paddocks should not be grazed lower than 2 inches.

Nutrition

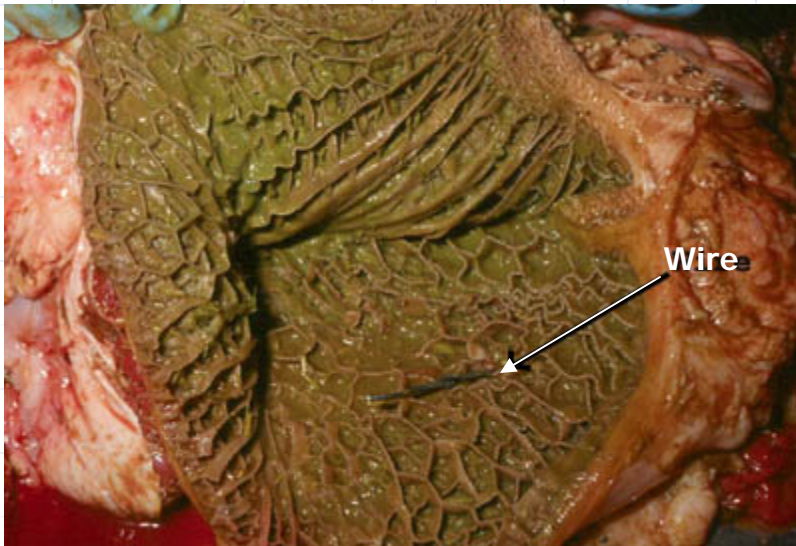


- ◆ Sheep/Goats are ruminants
- ◆ Have a large 'fermentation vat' or rumen, as part of the digestive system

The rumen



Diseases of the rumen and digestive system



Digestive problems

- ◆ **Overgrown teeth**
- ◆ **Hardware disease**
- ◆ **Choke & Indigestion**
 - **Bloat – 3 types**
 - Choke bloat
 - Dry bloat
 - Frothy bloat

Bloat prevention

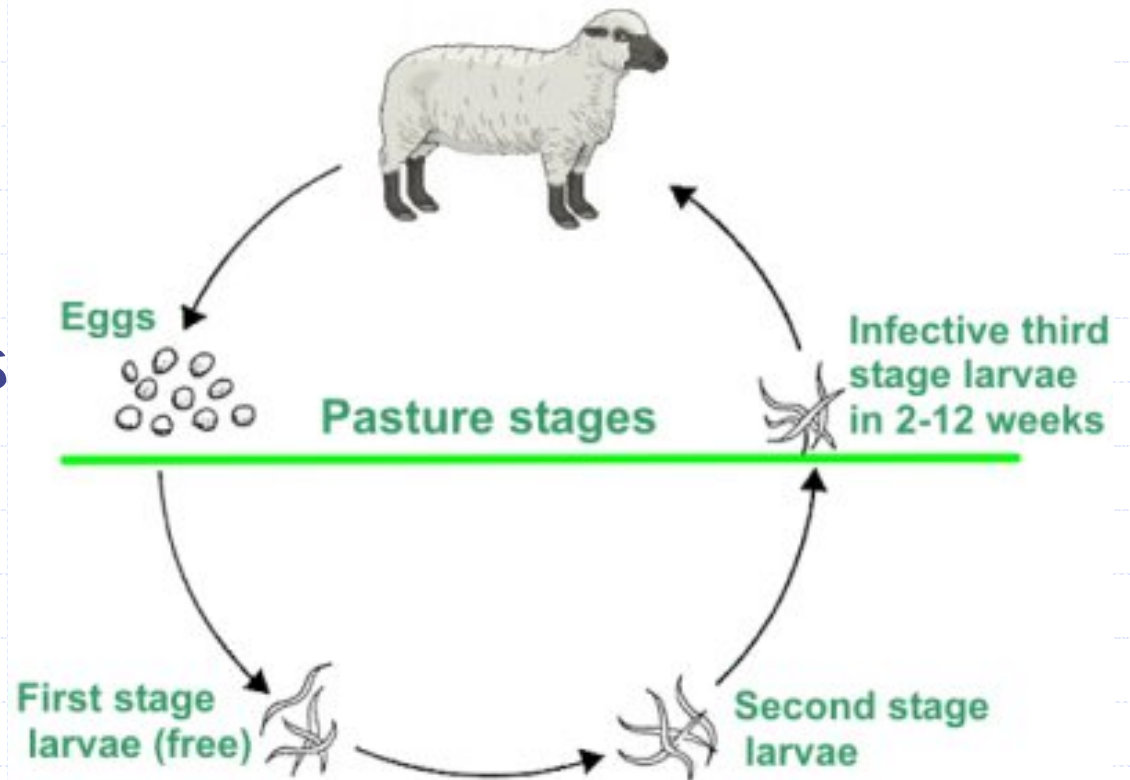
- ◆ Maintain at least 50% grass
- ◆ Do not start grazing when the pastures are wet from dew or rain
- ◆ Do not turn hungry animals on fresh legume pasture
- ◆ Cull frequent bloaters from your herd



Diseases of the rumen and digestive system

Internal Parasites

- ◆ Coccidiosis
- ◆ Intestinal worms
- ◆ Lungworms
- ◆ Tapeworms



Symptoms of internal parasites

- ◆ Pale (or white) eyes and gums
- ◆ Diarrhea
- ◆ Clumpy stools
- ◆ Fluffed hair
- ◆ Listlessness
- ◆ Rumen failure
- ◆ Chronic coughing (lung worms)- dry cough, especially after running or other exercise.
- ◆ "Bottle jaw" (severe infestation)- swelling under the jaw.



Treatment of internal parasites



- ◆ For coccidiosis, *Sulfas*, antibiotics for secondary bacterial infections, and the therapeutic dose of *amprolium* are available for use

Treatment of internal parasites



- ◆ For the treatment of Intestinal and lungworms, several drugs are available including *Ivomec*, *Panacur*, *valbazen*, *synanthic*

External parasites

- ◆ Lice
- ◆ Mites
- ◆ Ticks
- ◆ Keds
- ◆ Screwworm
- ◆ Nose bot fly



Prevention of external parasites



- ◆ Quarantine new animals
- ◆ Reduce stress factors
- ◆ Adequate nutrition
- ◆ Regular checks (esp. during deworming exercises)

Other common diseases of sheep and goats

From new-born to adult

- ◆ Navel ill
- ◆ Tetanus
- ◆ Joint ill
- ◆ Foot rot
- ◆ Mastitis
- ◆ Metritis
- ◆ Bladder stones (males)
- ◆ Abscesses



Important producer knowledge

- ◆ Preventative health care includes good nutrition, vaccination programs and the isolation of sick animals
- ◆ Sheep graze very close to the ground and so tend to be more susceptible to internal parasites than most other farm animals



Important producer knowledge

- ◆ Most parasite larvae do not crawl more than 5 inches from the ground
- ◆ Sheep brought from the western U.S. have little or no resistance to internal parasites
- ◆ Breeds with relatively high resistance to parasites include the Caribbean types of sheep



Important producer knowledge



- ◆ There's a growing market for goat products in SW Florida, but there is a shortage of local processing facilities

Information provided in this presentation will increase your awareness,
but field experience is priceless



Lee County Extension Service

**Agriculture &
Natural Resources**