

Introduction to Beekeeping – Course Outline



The UF/IFAS Lee County Extension, in collaboration with the **Beekeepers Association of Southwest Florida (BASF)** offers a 4-week introductory beekeeping class this summer.

Classes begin on Friday July 9, 2010. Space is limited to 40 students. Students receive basic startup kit including bee veil, gloves, bee box and hive tool, smoker and resource books. ***Bees will NOT be provided as part of this package!***

Cost of the course is \$150. Make Checks payable to LCBOCC. Pre-registration is necessary for inclusion in the class. For details call Claudia Piotrowicz at 239-533-7514 or e-mail cpiotrowicz@leegov.com. **Deadline for registration is June 30, 2010**

Morning classroom sessions will be held at the Extension Office located in Terry Park. Afternoon practical sessions will be conducted on the farm of a BASF member beekeeper.

July 09, 2010 – History of Honey Bees and their Behavior; Basic Materials

START	END	TOPIC
8:30am	9:00am	Course introductions
9:00am	9:30am	History of the honey bee and its uses
9:30am	10:00am	Honey bee hierarchy, Africanized bees
10:00am	10:15am	Break
10:15am	10:30am	Video – Benefits of Beekeeping, Equipment, Locating Your Hive
10:30am	10:45am	Personal Protection Equipment (PPE)
10:45am	11:30am	Beekeeping equipment (boxes, comb foundations, smoker, etc)
11:30am	Noon	Choosing a location for your hive
Noon	1:00pm	Lunch Break
1:00pm	4:00pm	Practical - putting together boxes, becoming familiar with tools

July 16, 2010 – Getting Started/Basic Management

START	END	TOPIC
8:30am	9:00am	Review
9:00am	9:30am	When and where to start; getting supplies
9:30am	9:45am	Knowing your location and what to expect from it
9:45am	10:15am	Video – Hiving Your Bees, Entering a Hive
10:15am	10:30am	Break
10:30am	11:00am	Hiving and your first week
11:00am	11:15am	Entering a hive
11:15am	Noon	Basic/Early management skills set
Noon	1:00pm	Lunch Break
1:00pm	4:00pm	Practical – Transporting bees, hiving, entering, management skills

July 23, 2010 – The Harvest

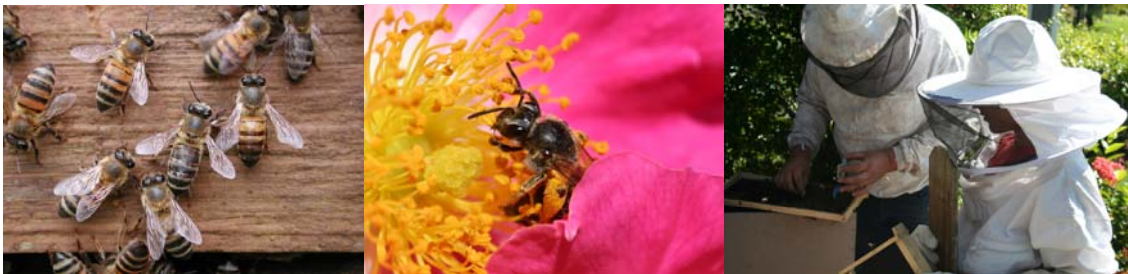
START	END	TOPIC
8:30am	8:45am	Review
8:45am	9:00am	What is honey? What is beeswax? What are their uses?
9:00am	9:15am	Video - Harvesting
9:15am	10:15am	Managing for Production (comb, surplus boxes, etc)
10:15am	10:30am	Break
10:30am	11:15am	Harvesting honey and beeswax
11:15am	11:45am	Extracting honey and beeswax
11:45am	Noon	Bottling, basic marketing and industry information
Noon	1:00pm	Lunch Break
1:00pm	4:00pm	Practical – Surplus boxes, comb, harvest, removal, bottling

July 30, 2010 – Advanced Management and Disease/Enemies

START	END	TOPIC
8:30am	8:45am	Review
8:45am	9:00am	Video –Second Season Start-up, Swarm Prevention
9:00am	9:30am	Queen Management and Swarming
9:30am	10:00am	Fall and winter
10:00am	10:30am	Starting your second season
10:30am	10:45am	Break
10:45am	11:45am	Diseases/Enemies (Prevention, Diagnosis, Treatment, Follow-up)
11:45am	Noon	Where to get more information and assistance (Local resources)
Noon	1:00pm	Lunch
1:00pm	4:00pm	Practical – Queens, swarming, first steps in Africanized honey bee removal

•The University of Florida, IFAS Lee County Extension Office is located at 3406 Palm Beach Boulevard, Fort Myers, Florida 33916. Visit our Website at <http://lee.ifas.ufl.edu/>

•Visit the BASF website at www.swfbees.com



The Institute of Food and Agricultural Sciences (IFAS) is an Equal Opportunity Institution authorized to provide research, educational information and other services only to individuals and institutions that function with non-discrimination with respect to race, creed, color, religion, age, disability, sex, sexual orientation, marital status, national origin, political opinions or affiliations. U.S. Department of Agriculture, Cooperative Extension Service, University of Florida, IFAS, Florida A. & M. University Cooperative Extension Program, and Boards of County Commissioners Cooperating.